



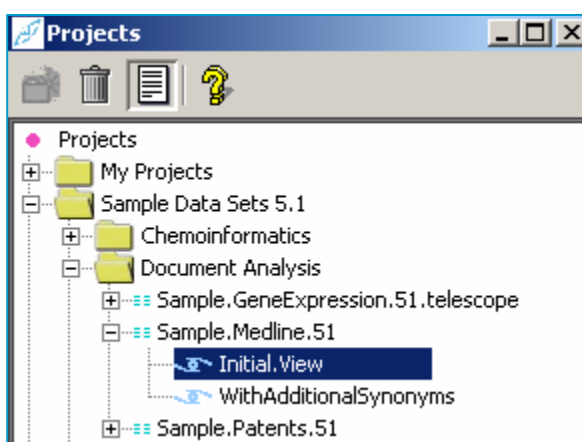
Getting started with OmniViz

Assessing the Relatedness of Documents using the Galaxy Visualization

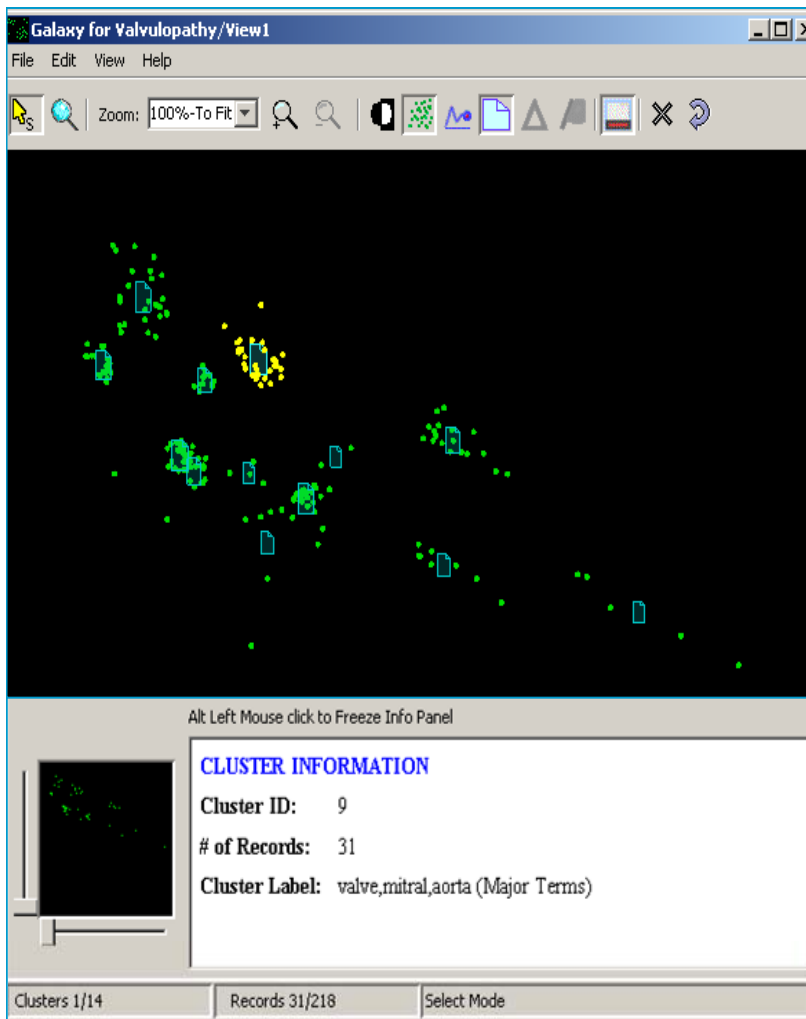
This Quick Start Guide explains how to assess the relatedness of documents using the Galaxy Visualization. The Guide assumes that you have already imported a document set into OmniViz (if not, see the appropriate Quick Start Guide).

The Galaxy view shows how every document is related to every other document. Documents are shown as points in clusters. Documents and clusters that are near each other will have similar document content, whereas documents and clusters that are far apart will have relatively disparate document content. The clustering is determined by the numeric vector calculated for each document, based on word occurrence, distribution and associations.

1. Open OmniViz. In the **Projects** window, navigate to your data set and **View** of interest by clicking on the plus signs (the Projects window opens by default. Should the projects window not be open, select **Window** → **Projects** to open the Projects window).

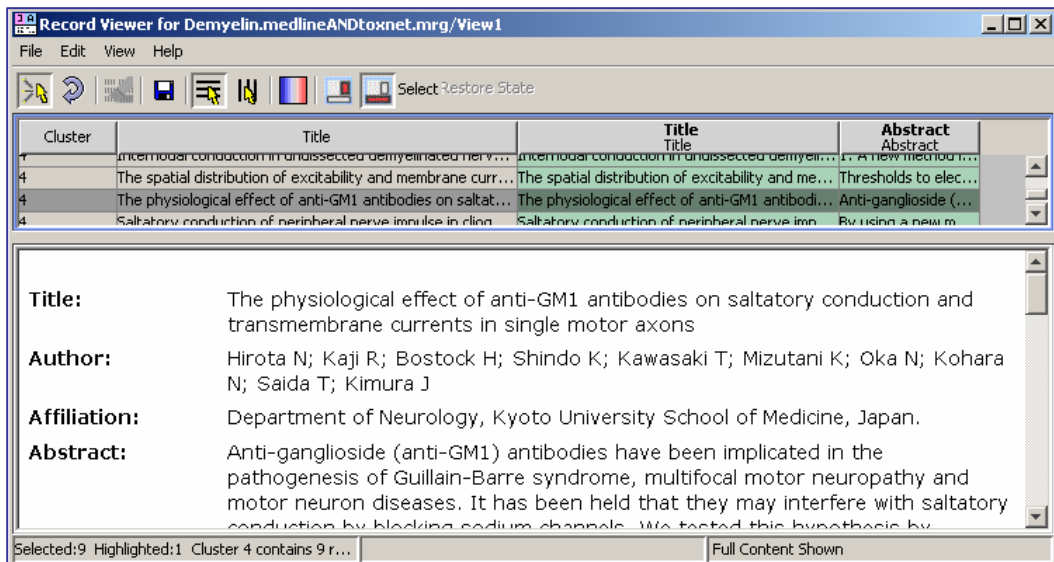


2. Double click on the **View** of interest and the **Galaxy** visualization will appear (alternatively you can highlight the View and choose Galaxy from the Visualizations menu in the OmniViz Desktop).



In the **Galaxy** visualization, each point represents a document, and the documents are organized into clusters.

3. Hover over any cluster centroid (the document-shaped icons) to view the cluster ID, the number of records and the top 3 discriminating Major Terms in the information panel below.
4. If you hover over any individual document point, you will see the document title (Record Title) in the information panel below.
5. Select documents by clicking on a single point, or a cluster centroid, or clicking and dragging a box over an area of interest (useful to use in conjunction with other Visualizations and Tools, e.g. the Gist Tool). In the picture above, the cluster highlighted in yellow has been selected.
6. Double click on a document point, or a cluster centroid, to open up the **Record Viewer**. This Viewer can be used to read the selected documents (see also the Quick Start Guide to querying documents in order to view records that contains specific terms of interest).



The top panel of the Record Viewer consists, from the left, of Cluster ID and Title columns, and then data columns. You can select different data columns to view by selecting **Choose Column Set(s)** from the **View** menu. In the resulting **Record Viewer Column Chooser** window, highlight columns of interest using Ctrl and click, and then click on **OK**. The bottom panel of the Record Viewer displays the content of the currently highlighted record.