



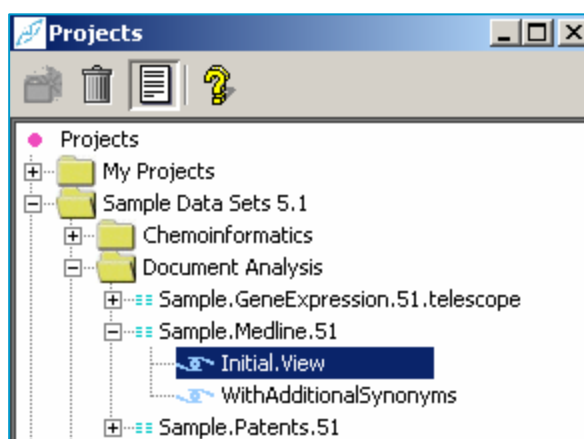
## Getting started with OmniViz

### Searching for Terms in a Data Set using Query by Example

The Query By Example (QBE) search looks for documents most closely related to the query (i.e. a set of terms OR a specified document(s)), rather than documents that contain ALL of the query terms (as for Word Query). The QBE search function is found within the Text Query tool. This Guide assumes that you have already imported a data set into OmniViz (if not, see the appropriate Quick Start Guide).


The QBE search looks at the occurrence of each query term in each document, and retrieves those documents that have the highest occurrence of the term(s). However, not all of the terms need be present for a document to be retrieved. In addition, this search will identify documents that contain terms (e.g. febrile, temperature) that are related to the query term (e.g. fever).

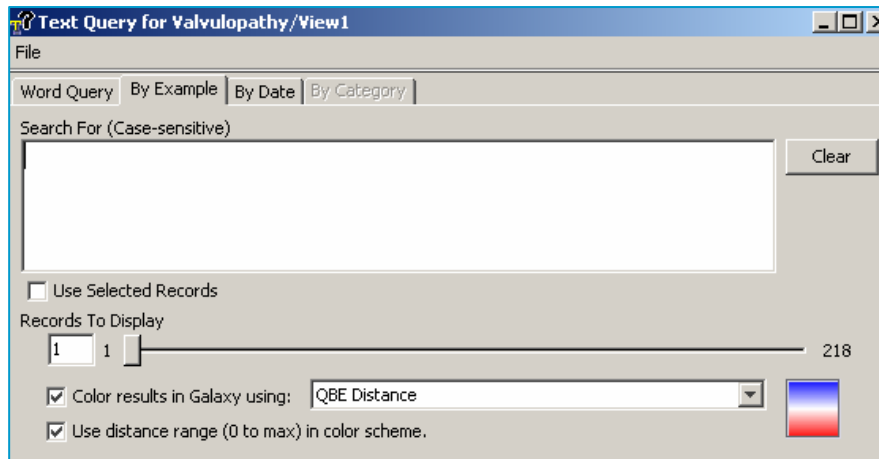
1. Open OmniViz. In the **Projects** window, navigate to your data set and **View** of interest by clicking on the plus signs (the Projects window opens by default. Should the projects window not be open, select **Window** → **Projects** to open the Projects window).


**NOTE:**

When using the Text Query tool, it is useful to have the Galaxy visualization open so that you can view the location of documents that contain your term(s) of interest (For more information on the Galaxy view, see the Quick Start Guide to Assessing the Relatedness of Documents using the Galaxy visualization).

2. Before opening up the **Text Query** tool, we will open up the **Galaxy** visualization. Double click on the **View** of interest to open up the Galaxy visualization (alternatively you can highlight the View and choose Galaxy from the Visualizations menu in the OmniViz Desktop).

- Then, in the **OmniViz Desktop**, select the **Text Query** tool from the **Query** menu or click on .
- In the **Text Query** tool, select the **By Example** tab.



 **NOTE:** To use the By Example query, you must have clustered on a text Column Set. If you have imported some documents using the Wizard, the default fields (columns) used for clustering are Title and Abstract. In this case, you are OK to use the By Example query.


- To search for documents in which a term(s) is highly represented, enter your term(s) in the **Search For** box.

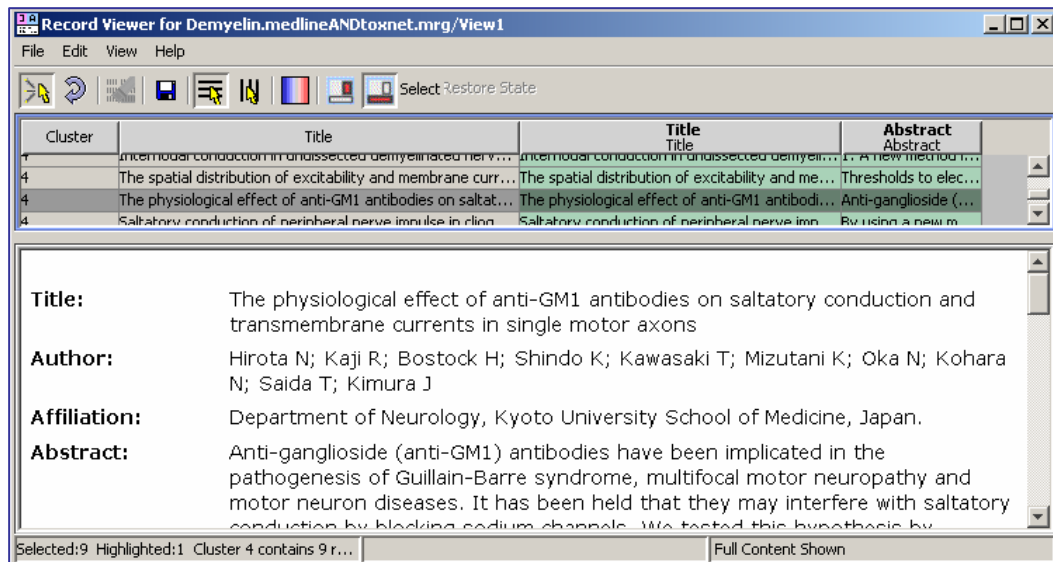
**OR**

- To search for documents similar to a specified document(s), select the document(s) of interest (e.g. in the Galaxy visualization) and then check the **Use Selected Records** check box.
- Define the number of documents to be retrieved by changing the number in the **Records To Display** box or by moving the slide ranger to the right.
- Click **Select Records**. The **Query History** now reflects the new query.

The QBE search looks at the occurrence of each query term in each document, and retrieves those documents that have the highest occurrence of the term(s). However, not all of the terms need be present for a document to be retrieved. In addition, this search will identify documents that contain terms (e.g. febrile, temperature) that are related to the query term (e.g. fever).

Look in the **Galaxy** visualization to see where your records are located (they will be highlighted in yellow). They may be located in a particular area of the Galaxy, or in a particular cluster.

- To see the degree of similarity between selected documents and the query term(s), ensure the **Color results in Galaxy using** option is checked and move the **Records to display** slider to the right. Notice the records being colored in the Galaxy visualization. The records which light up first (in red) are more closely related to your query. Records which light up later (in white and blue) are less related.
- To view the selected records, open the **Record Viewer** by selecting it from the **Viewers** menu in the **OmniViz Desktop** or by clicking on the icon .



The top panel of the **Record Viewer** consists, from the left, of Cluster ID and Title columns, and then data columns. You can select different data columns to view by selecting **Choose Column Set(s)** from the **View** menu. In the resulting **Record Viewer Column Chooser** window, highlight columns of interest using Ctrl and click, and then click on **OK**. The bottom panel of the Record Viewer displays the content of the currently highlighted record.